

WP1:Enhancing and promotion of bi-regional S&T policy dialogue and collaboration

Jassim Sheikh

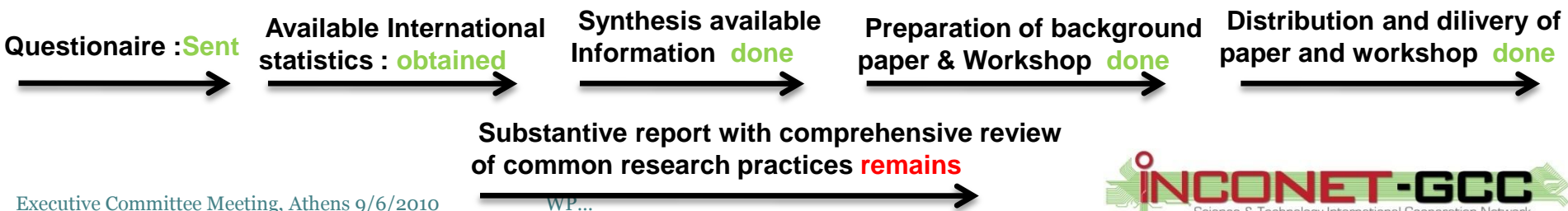
Jönköping International Business School
– Jönköping University

Objective of WP1

- Review and evaluate the state-of-the-art of methodologies and practices used in current European and GCC Research Initiatives as S&T policy advisory (Jönköping University)
- Identify common themes and practices and provide a comprehensive list of Research organisations in the two regions with similar activities and potential for collaboration (University of Ferrara)
- Establish a concrete plan of collaboration in S&T policy advisory resulting from the comparative evaluation of methods and impact in Research and based on the particular context and policy structures of the two regions (London School of Economics)

Task 1.1: Review of European and GCC S&T (Task Leader: JU, in collaboration with TRC - Leading partners and coordinators in WP1)

- Parameters defined to fulfil this task were:
 - To organise a two day workshop to focus on information and knowledge exchange of the state-of-the-art in current European and GCC Research activities and initiatives by inviting group of experts from Europe and Mena regions
 - To involve discussions on methodological and impact assessment issues in the two regions.
 - The outcome : Comprehensive review of common Research practices, in relation to institutional and policy constraints which will be fundamental in writing a report on comparative analysis and best practice recommendations on research in Europe and GCC region.
- Road Map (12 Months)



INCONET-GCC (Round table Workshop on Best Practice in S&T Policy)

- Background paper has been distributed with some substantive overview information on best practice in S&T policies
- This workshop will identify and examine best policy practices in science, technology, and innovation policies
- What is S&T Policy?
- Why S&T Policy?
- Relevance of Relationship between S&T, R&D, innovation, enterprise and industry development and entrepreneurship
- Measuring the success of S&T policy : KPIs, outcomes and impact
- What data is available and what it tells us on performances
- Strengths and weaknesses of policies currently in place
- What can/are the new initiatives and ways towards improvement
- Concrete conclusions on strengths and weaknesses in the GCC-countries
- Concrete guidance of measures to be taken through international collaboration, including through initiatives of joint research and innovation activities between the GCC and European Union countries

OUTCOME

- The outcomes will include conference proceedings and a substantive report with comprehensive review of common research practices, in relation to institutional and policy constraints in the participating countries

Jönköping International Business School - Jönköping University- SWEDEN

What We are most proud of so far....

- Proud and happy to set up this project along with Euro Consultants and act as leading partner with TRC in WP1 and Co-ordinate with other Stakeholders
- Rich international milieu (78 nationalities) created at the Jönköping campus
- International recognition as leading research center in Entrepreneurship, SME growth, Family Business, Media Management and International taxation (attracting >9 Meuro/year in competitive grants)
- Out of the Top 100 institutions worldwide, JIBS is ranked Number 9 in researching and publishing on entrepreneurship (2009 Academy of Management)
- Our students starts >100 companies/year
- >90% of our students spend at least one semester at any of the 200+ partner universities in 70+ countries
- Strategic collaborations with Babson College, Moscow State University, Tsinghua University and Rotman School of Management



JÖNKÖPING UNIVERSITY

Jönköping University
Foundation



SCHOOL OF
HEALTH SCIENCES
JÖNKÖPING UNIVERSITY



SCHOOL OF EDUCATION
AND COMMUNICATION
JÖNKÖPING UNIVERSITY



SCHOOL OF ENGINEERING
JÖNKÖPING UNIVERSITY



JÖNKÖPING INTERNATIONAL
BUSINESS SCHOOL
JÖNKÖPING UNIVERSITY

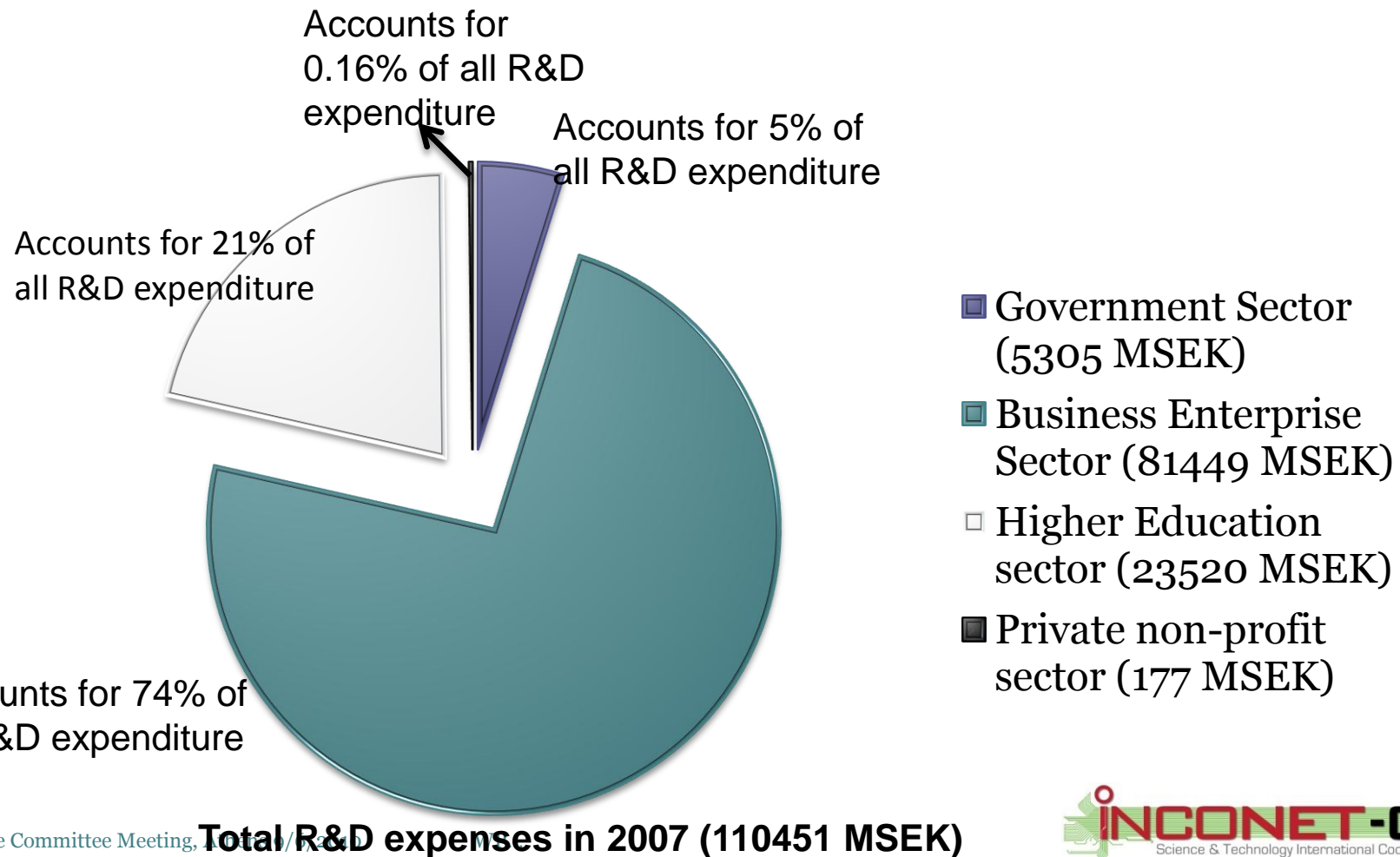


UNIVERSITY SERVICES
JÖNKÖPING UNIVERSITY



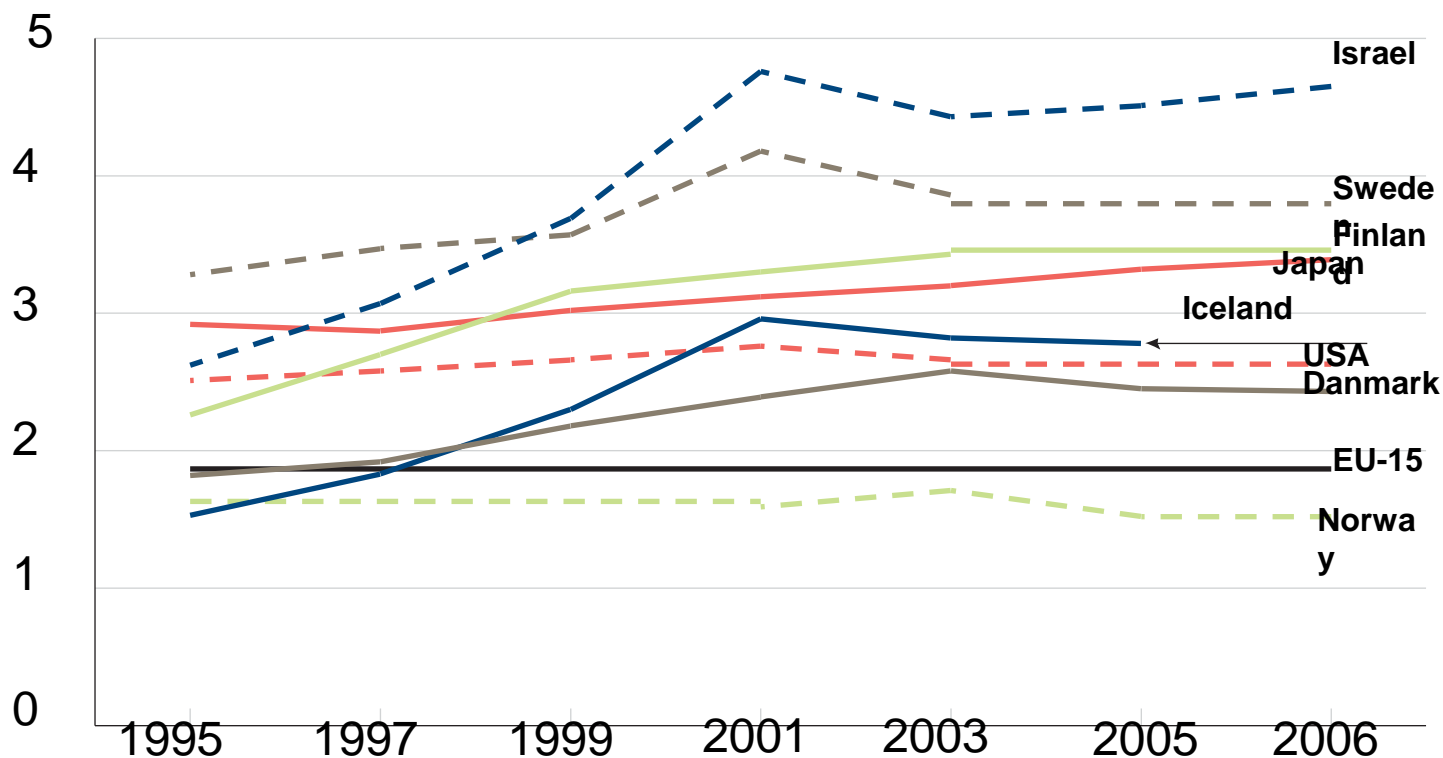
Swedish Innovation System

- Area 450295 square kilometers, Population 9.1 Million, 36 Universities
- Sweden belongs to the top investors in R&D-intensity



• R&D expenditure as a share of GDP, international comparison

- Sweden has reached the goal of Lisbon strategy i.e, invest 3% of GDP on R&D, where at least two-thirds of these investments should come from business enterprise sector



Investments for R&D in relation to GDP

- Sweden's investments in R&D as a share of GDP amounted to 3.6 percent in 2007, which is the highest level of investments for R&D in relation to GDP compared to the countries within the OECD
- Only Israel, not a member of OECD, has higher investments in R&D in relation to GDP than Sweden, or nearly 4.7 percent 2007



Source: Statistics Sweden, 2007

R&D in relation to GDP in OECD 2007

‘Science and technology multiply around us. To an increasing extent they dictate the languages in which we speak and think. Either we use those languages, or we remain mute’

J.G. BALLARD

Thank You for Listening, and for being active in speaking out on this conference!